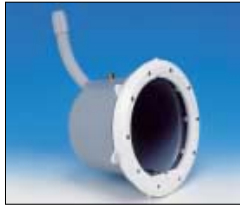


### Specifications – DuraNiche

Model	Pool Type	Description
SP0600U	Gunite/Concrete	Injection-molded PVC Fixture Housing with combination 3/4" or 1" socket conduit connection, with top, rear or 45° conduit capability. U.L. Listed and complies with N.E.C. (1993). Other advanced features include a replaceable mounting bracket, easily accessible connections for grounding/bonding and an internally-threaded connection for pressure testing the conduit line. For AstroLite™ and DuraLite™ Series fixtures.
SP0607U	Vinyl/Fiberglass	Waterproof Fixture Housing Assembly. Injection-molded PVC Fixture Housing with combination 3/4" or 1" socket conduit connection, with top, rear or 45° conduit capability. U.L. Listed and complies with N.E.C. (1993). Duralon Face Rim and Back-Up Ring (with drilled tabs), Gaskets and Screws. Other advanced features include a replaceable mounting bracket, easily accessible connections for grounding/bonding and an internally-threaded connection for pressure testing the conduit line. For AstroLite™ and DuraLite™ Series fixtures.



**SP0600U**  
Front-to-back: 7-15/16"



**SP0607U**  
Maximum O.D. of shell back: 10-5/8"  
O.D. of shell flange: 12-3/16"



This convenient cover-up plate protects the interior of the niche and mounting threads during guniting.

### Specifications – AstroLite

Thermoplastic Face Rim Model	Stainless Steel Face Rim Model	Description
SP0580	SP0580S	100 watt, 12 volt light — 13', 26' or 50' cord
SP0581	SP0581S	300 watt, 12 volt light — 13', 26' or 50' cord
SP0582L	SP0582SL	300 watt, 115 volt light — 13', 26' or 50' cord
SP0583L	SP0583SL	500 watt, 115 volt light — 13', 26', 50', 75' or 100' cord

Models with suffix "L" are equipped with Automatic Thermal Switch (ATS). AstroLite Series light fixtures mount into DuraNiche Series niches only.



**SP0580 Series**  
Outside diameter of face rim: 10-3/4"



**SP0580S Series**  
Outside diameter of face rim: 10-3/4"



**SP0580L Selecta-Color™ Lens Kit.** Now change the mood of your pool at a moment's notice. Simply snap any of the four easy-to-change lens covers over the clear lens of the AstroLite fixture. No fixture removal or assembly is required.



Guide No. WBDT,  
File No. E39338

**HAYWARD®**

America's #1 Pool Water Systems

1-888-HAYWARD

www.haywardnet.com

4301

©2001 Hayward Pool Products, Inc.

SHED NEW  
LIGHT  
ON A BRIGHT  
IDEA



**HAYWARD®**

America's #1 Pool Water Systems

# HAYWARD LIGHTING SYSTEM

## DURANICHE™ & ASTROLITE™ UNDERWATER LIGHTING



Hayward  
Underwater  
Lighting  
System



Hayward's DuraNiche Niche Series: engineered for superior performance, non-corrosive durability and plumbing versatility — plus the lowest installed cost. SP0607U DuraNiche for vinyl/ fiberglass pools (illustrated).

As the final traces of mother nature's brilliant sunshine disappear over the horizon until yet another morning, a whole new nocturnal world, full of quiet beauty and majesty drifts down from the stars and is known as nightfall.

From the joy of gazing at a shooting star, to taking in a backyard symphony with lawn crickets as the musicians: what better place to unwind from the pressures of the day than in and around your swimming pool or spa — with evening as your backdrop.

And what better way to truly enhance your night-time pool life than with the installation of a Hayward Underwater Lighting System — the next generation in pool light technology.

### Advanced DuraNiche™ PVC Niche

What makes the Hayward Underwater Lighting System so advanced? Start with its DuraNiche PVC niche series. Unlike metallic niches, DuraNiche is injection-molded of strong, durable PVC. Which means you can count on corrosion-free, all weather performance for years to come.

Reliability is further extended with DuraNiche's socket conduit connection. Designed for quick and simple gluing to PVC pipe, the connection provides a cleaner, more durable seal when compared to threaded-type conduit connections. Plus, the conduit hub is an integral part of the molded niche, which offers extra durability during installation.



Socket conduit connection for simple gluing.

### Plumbing Versatility

DuraNiche also boasts a significant advantage in plumbing versatility. Each niche includes a 1" 45° spigot elbow that allows the choice of either top, rear or 45° conduit connection. In addition, the connection can be converted to 3/4" with the installation of a reducing adaptor, also included with each niche.

### Lowest Installed Cost

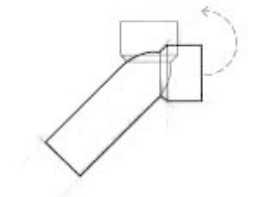
When you select the Hayward Underwater Lighting System, you'll not only gain the benefits of superior performance, extra durability and plumbing versatility, you'll also realize the lowest installed cost. The ability to accept PVC conduit over expensive metal conduit enables the Hayward system to offer true bottom line savings in materials, as well as time to install.

### Gunite/Concrete Pools

For gunite and concrete pools, DuraNiche features a 3/4" set-back plaster flange with tie-off holes to secure to re-bar. This allows positive positioning of the niche during guniting and ensures a professional appearance in the pool wall. A cover-up plate is provided to protect the niche and mounting threads during guniting. Plus, a unique 90° ledge at the bottom of the flange prevents "slumping" during plastering.



3/4" plaster flange with 90° "no slump" ledge.



45° sweep elbow offers unparalleled plumbing versatility — simple rotation of elbow lets you select top or rear conduit connection, in addition to DuraNiche's standard 45° outlet — all in one niche.

### Vinyl/Fiberglass Pools

For vinyl and fiberglass pools, DuraNiche incorporates the dependability of Hayward's proven wall panel sealing method. Since the niche fits all standard punch designs, no tooling changes are required. The niche also features an attractive face rim assembly, injection-molded of corrosion-proof Duralon™.

### AstroLite™ Light Series

As part of the Hayward Underwater Lighting System, AstroLite Series light fixtures add a new dimension of beauty, safety and enjoyment to any pool or spa.

### Attractive Styling

AstroLite Series fixtures are available in a choice of attractive face rims, from an injection-molded patterned design, made of rugged, non-corrosive glass-filled polypropylene: to a smooth, machine-polished stainless steel design.

They feature a convenient E-Z Lock™ clamp and reflector assembly for simple relamping. And, they come standard in a wide range of voltages, wattages and cord lengths to satisfy virtually any installation.



E-Z Lock clamp and reflector assembly.

### Let Hayward Light Up Your Night

Take advantage of the beauty that is known as nightfall with the Hayward Underwater Lighting System. No other pool lighting system offers such performance, durability and versatility — all at the lowest installed cost.

Plus, you'll also be increasing your return on investment by spreading your time in and around your pool over a greater period of use. You may even get a chance to make a wish on a shooting star.



AstroLite Series light fixtures are available in a choice of face rim designs — from patterned thermoplastic (top) to smooth stainless steel (bottom).